

# LUXORJET

1. White colour as a background on the whole surface of the glass trophy
2. White colour as a background under the colour pixels
3. Slightly transparent colour print (without a white colour)

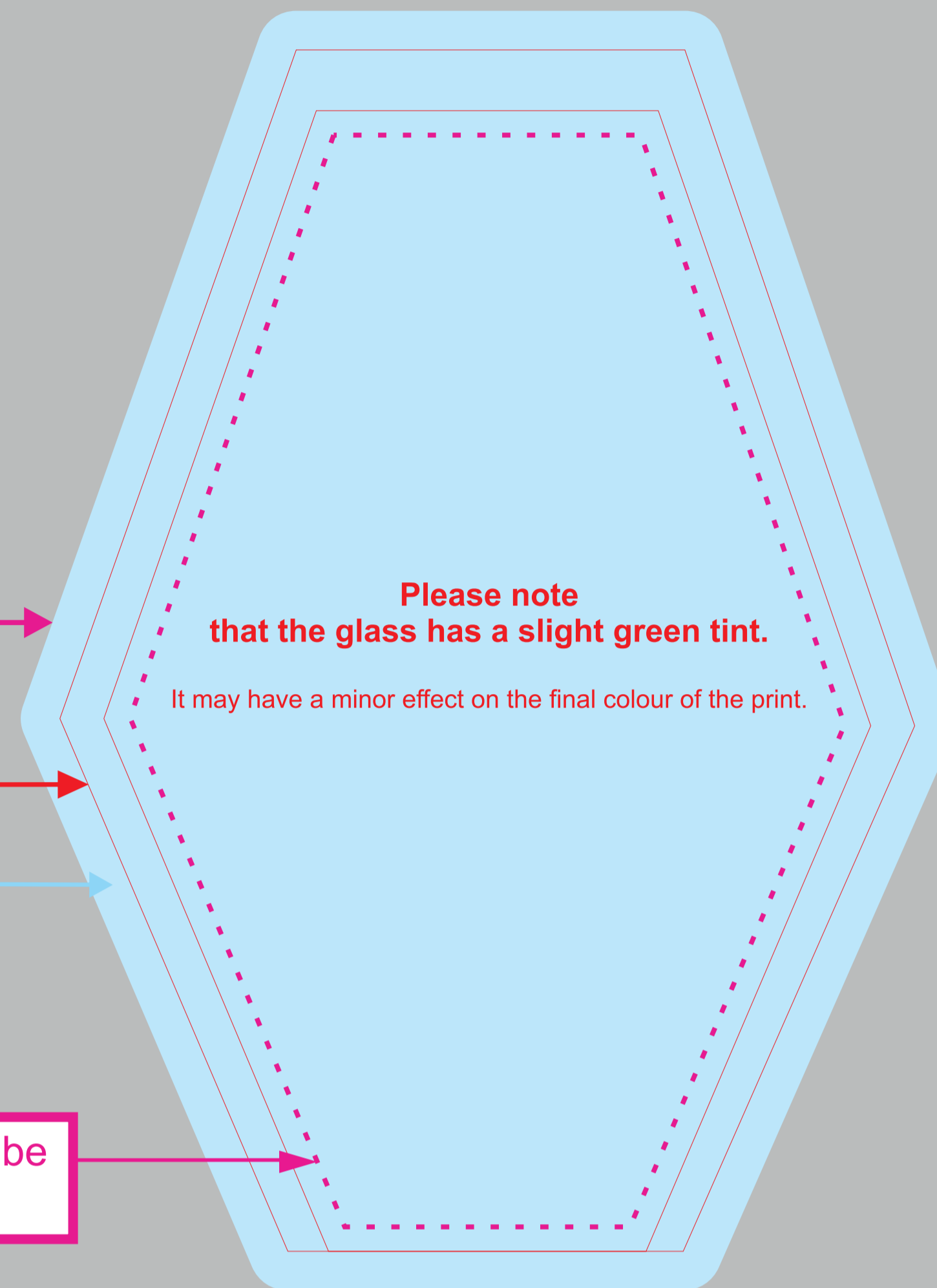
## Tips when preparing the artwork by yourself

**LUXORJET**

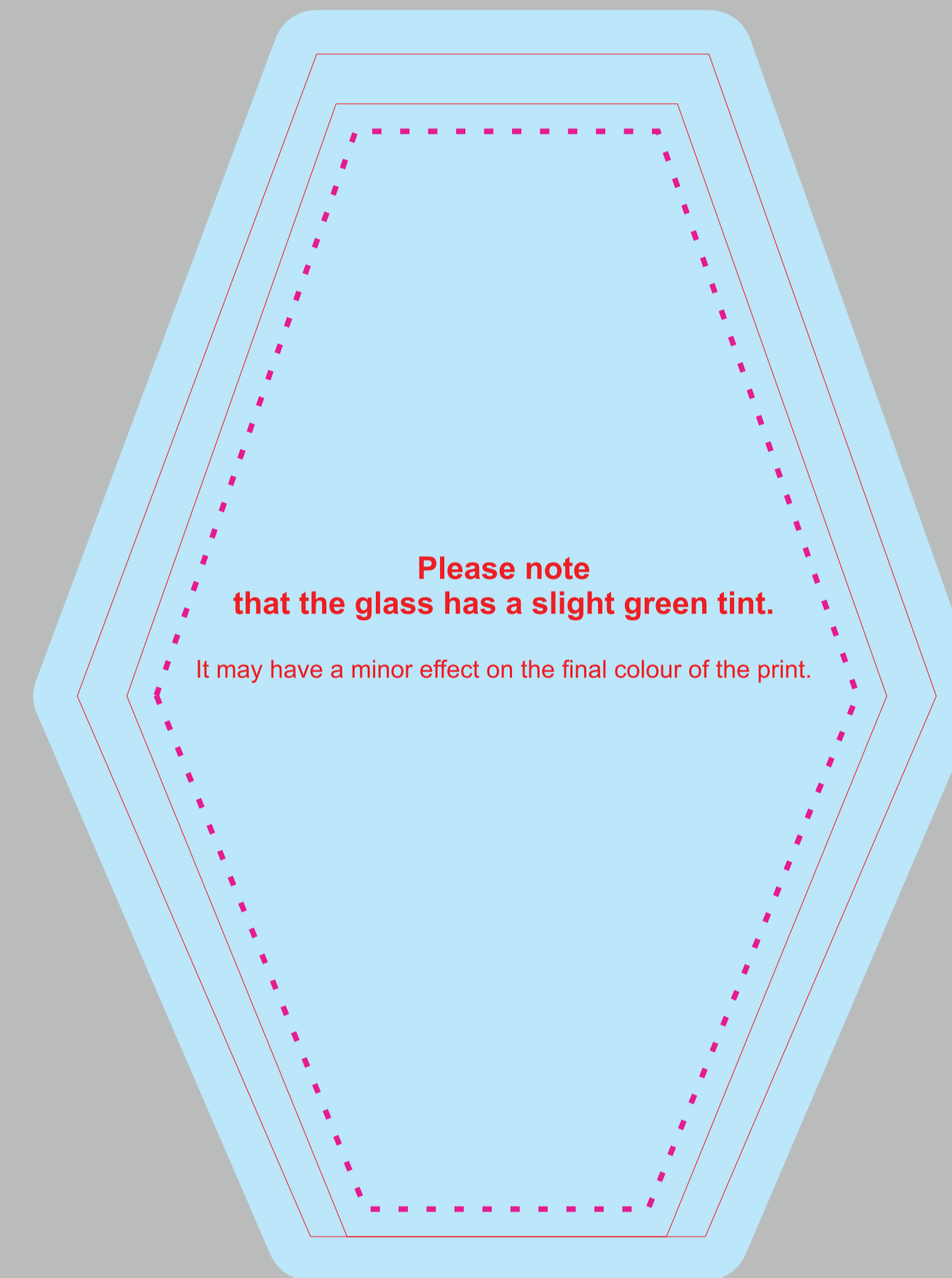
- if the coloured background has to reach the edge of the glass, extend it beyond the outline of the glass 8 mm on each side
- minimum resolution for illustrations or photos 300 dpi
- external outline of the glass - TEMPLATE please do not change the color and thickness of the line
- all fonts converted to curves**
- smallest font used 8 pt
- minimum thickness of lines used in the design 0.2 mm

! Because of manual processing of the glass trophies, template may slightly differ from the final product.

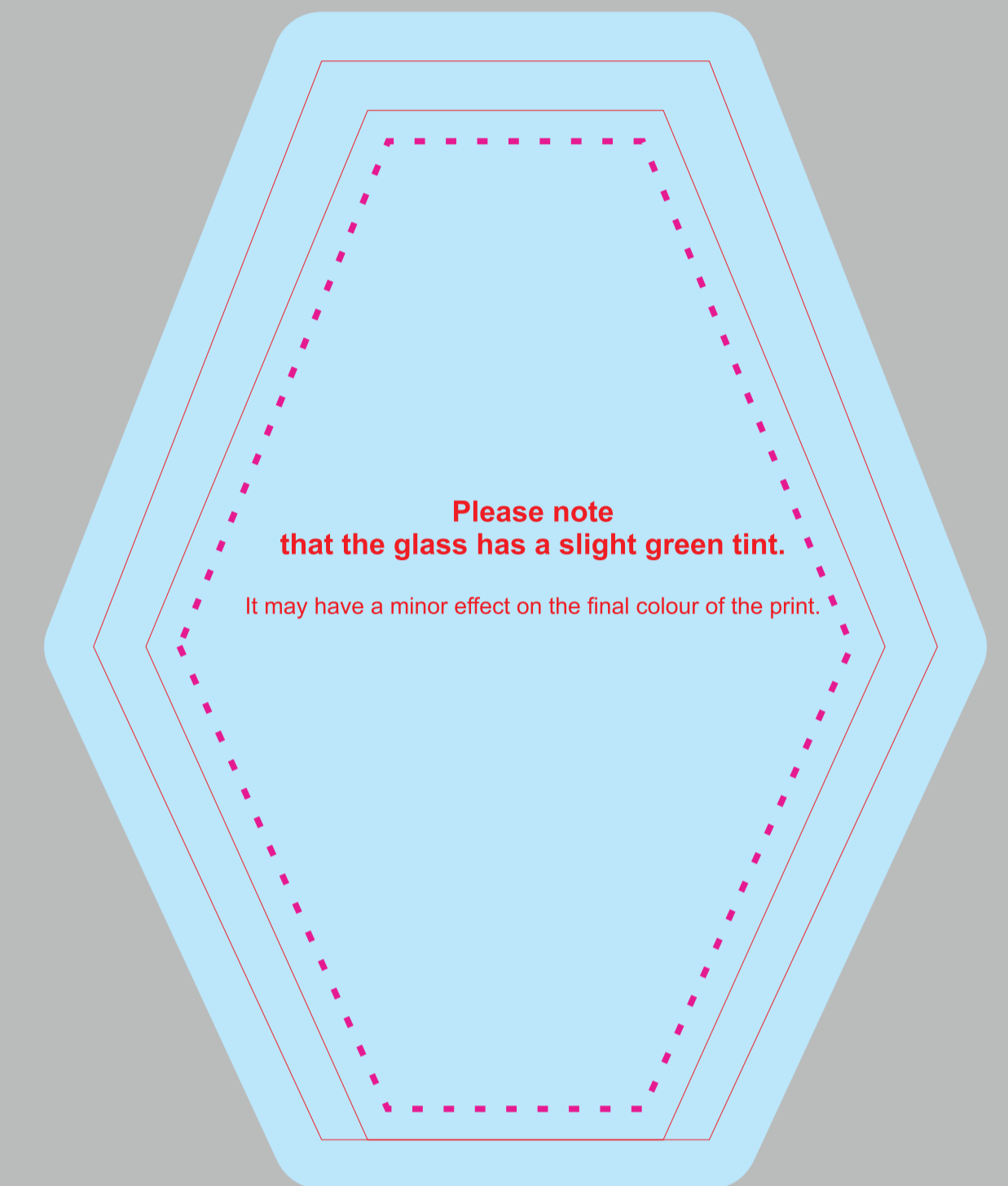
an area where essential elements should be placed, i.e. text, logo, etc.



GS112-26



GS112-23



GS112-19

# ENGRAVING

## Tips when preparing the artwork by yourself

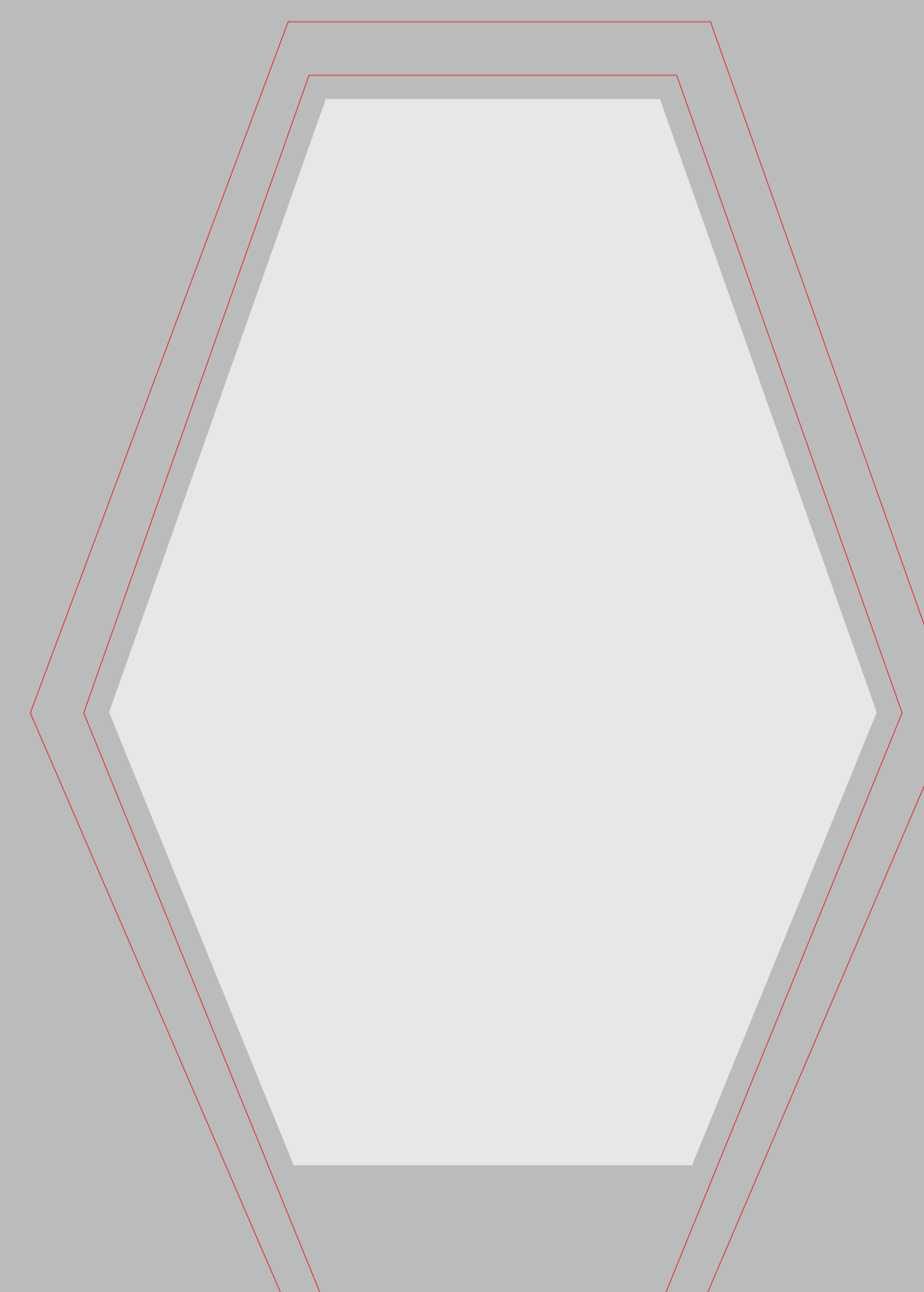
**ENGRAVING**

- external outline of the glass - TEMPLATE please do not change the color and thickness of the line
- all fonts converted to curves**
- smallest font used 8 pt
- minimum thickness of lines used in the design 0.2 mm
- laser engraving area**
- we only use vector objects (inscriptions, logos, characters)
- the pattern for engraving will be prepared in grey using 70 % black in C M Y K scale
- when filling with paint, please specify colour (paint palette in separate file)
- distance of the lowest inscription from the base 20 mm

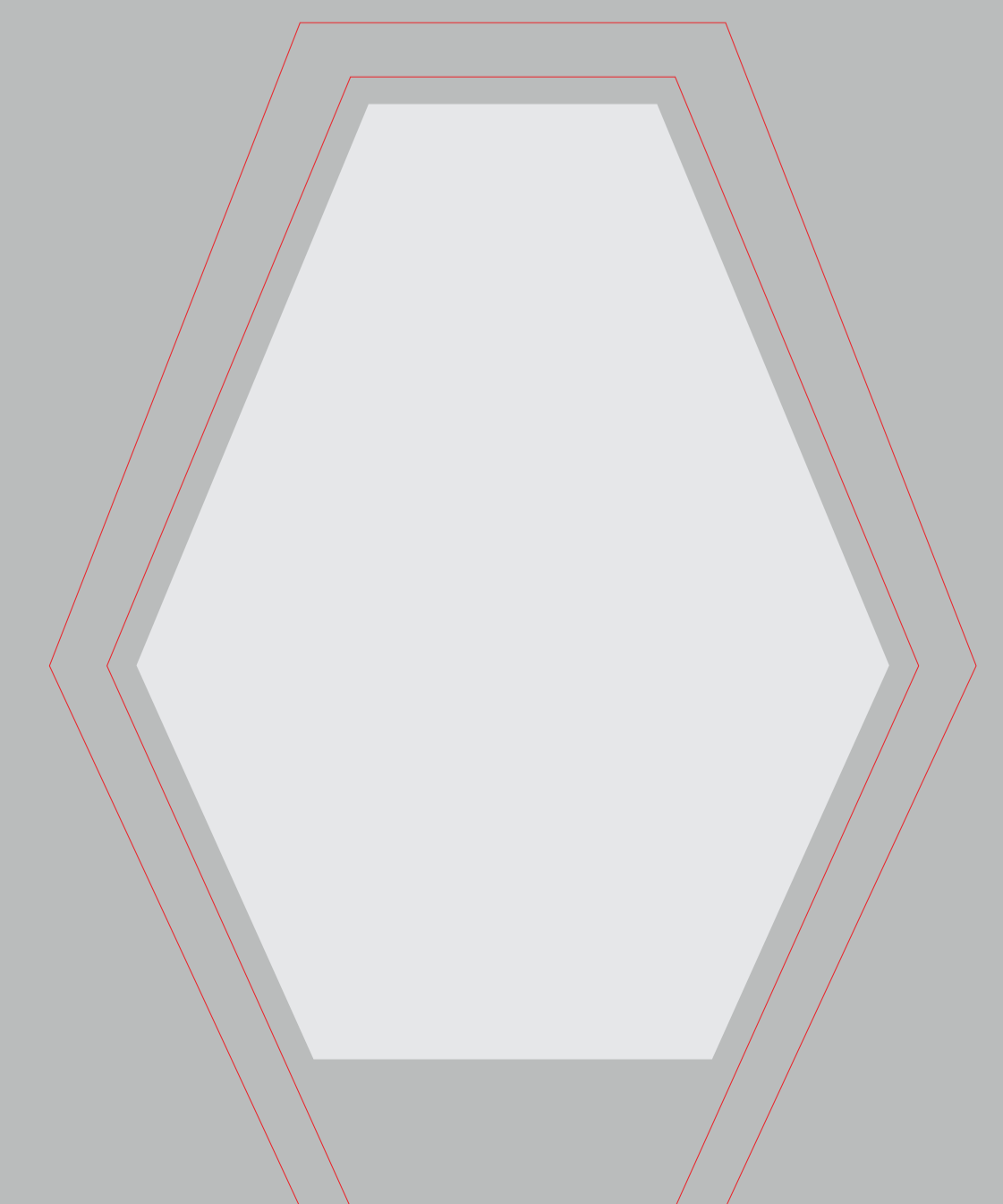
! Because of manual processing of the glass trophies, template may slightly differ from the final product.



GS112-26



GS112-23



GS112-19