

# LUXORJET

- 1. White colour as a background on the whole surface of the glass trophy
- 2. White colour as a background under the colour pixels
- 3. Slightly transparent colour print (without a white colour)

## Tips when preparing the artwork by yourself

LUXORJET

if the coloured background has to reach the edge of the glass, extend it beyond the outline of the glass 8 mm on each side

minimum resolution for illustrations or photos 300 dpi

The artwork should be prepared in CMYK palette

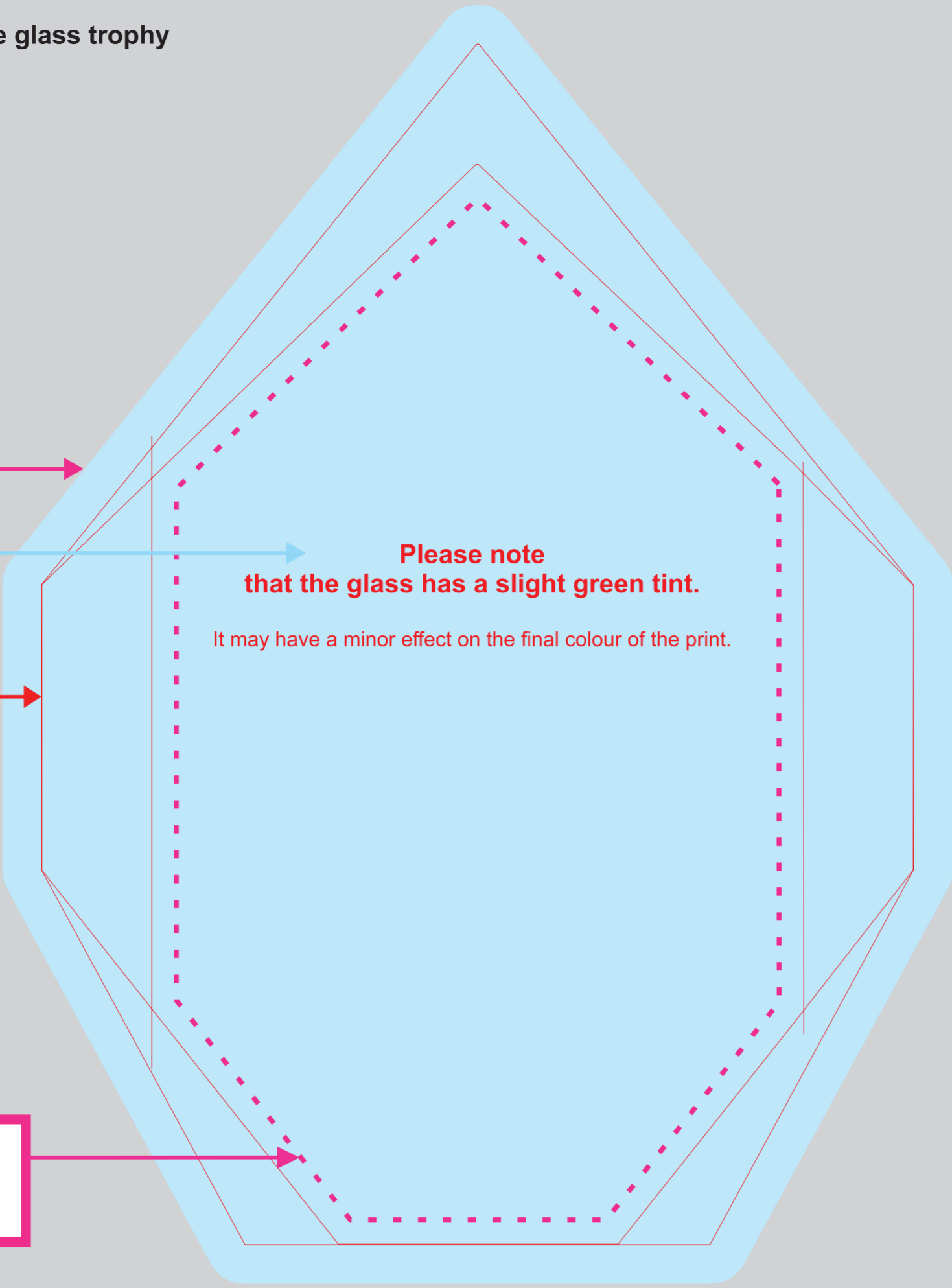
external outline of the glass - TEMPLATE please do not change the color and thickness of the line

all fonts converted to curves

smallest font used 8 pt

minimum thickness of lines used in the design 0.2 mm

! Because of manual processing of the glass trophies, template may slightly differ from the final product.



an area where essential elements should be placed, i.e. text, logo, etc.

G018

ETUI

# ENGRAVING

## Tips when preparing the artwork by yourself

external outline of the glass - TEMPLATE please do not change the color and thickness of the line

all fonts converted to curves

smallest font used 8 pt

minimum thickness of lines used in the design 0.2 mm

laser engraving area

we only use vector objects (inscriptions, logos, characters )

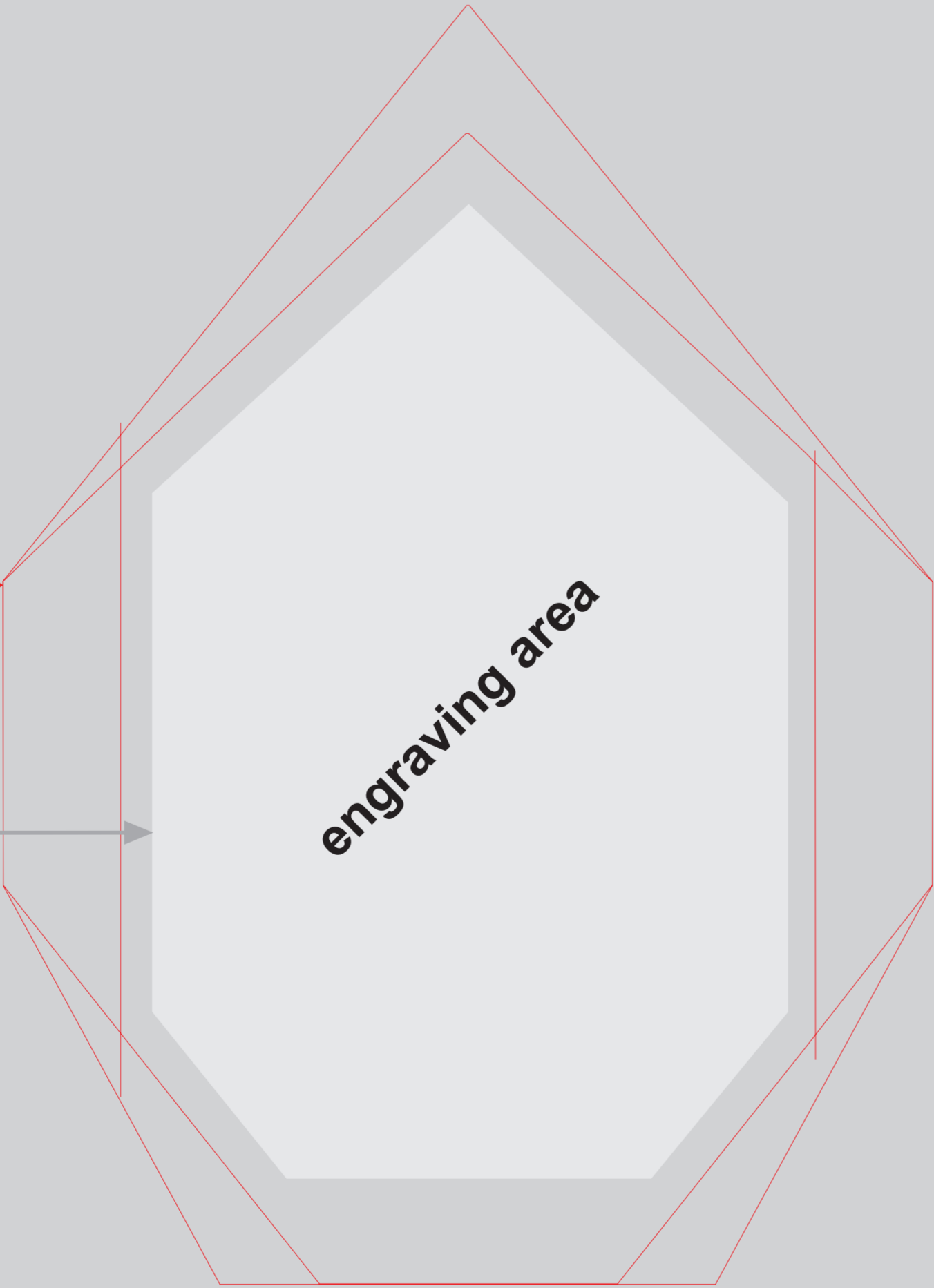
the pattern for engraving will be prepared in grey using 70 % black in C M Y K scale

when filling with paint, please specify colour (paint palette in separate file

distance of the lowest inscription from the base 20 mm

ENGRAVING

! Because of manual processing of the glass trophies, template may slightly differ from the final product.



G018

ETUI