

LUXORJET

Tips when preparing the artwork by yourself

LUXORJET

if the colored background is to reach the edge of the glass, we extend it beyond the outline of the glass according to the blue oneprint fields

minimum resolution for illustrations or photos 300 dpi

The artwork should be prepared in CMYK palette

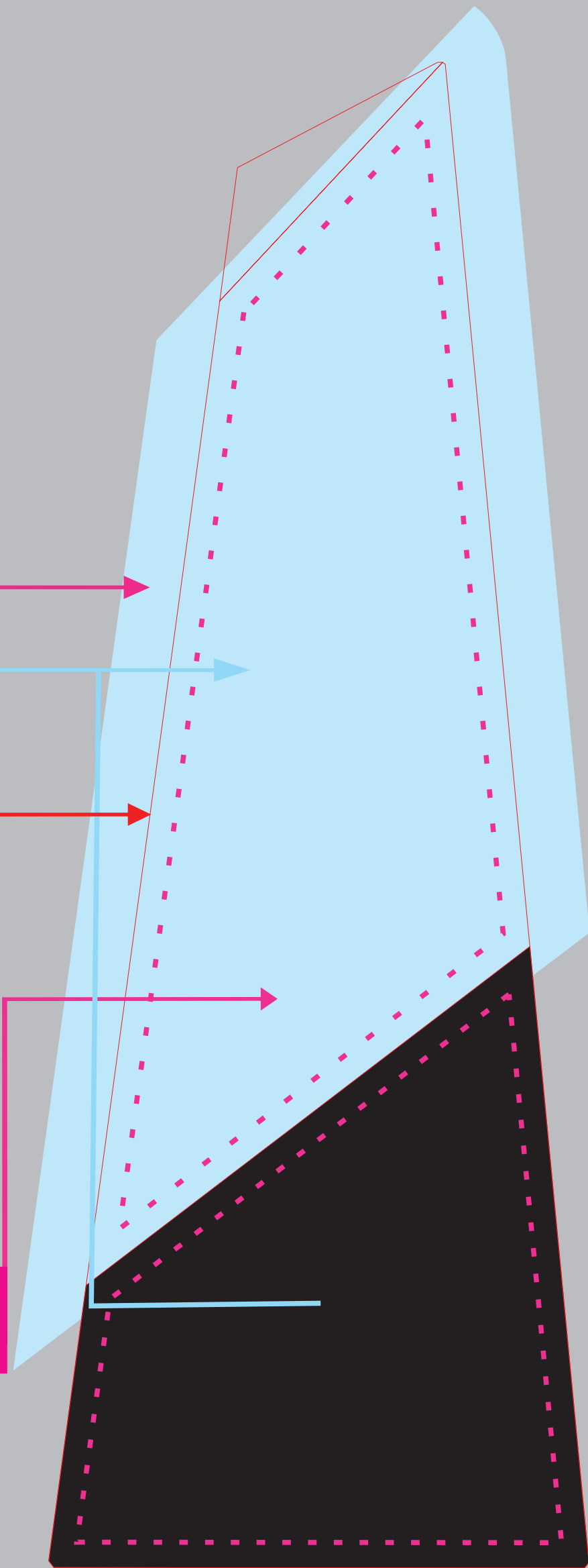
external outline of the glass - TEMPLATE please do not change the color and thickness of the line

all fonts converted to curves

smallest font used 8 pt

minimum thickness of lines used in the design 0.2 mm

an area where essential elements should be placed, i.e. text, logo, etc.



C078

the top cut of the glass is UNPRINTED



ENGRAVING

Tips when preparing the artwork by yourself

external outline of the glass - TEMPLATE please do not change the color and thickness of the line

all fonts converted to curves

smallest font used 8 pt

minimum thickness of lines used in the design 0.2 mm

laser engraving area

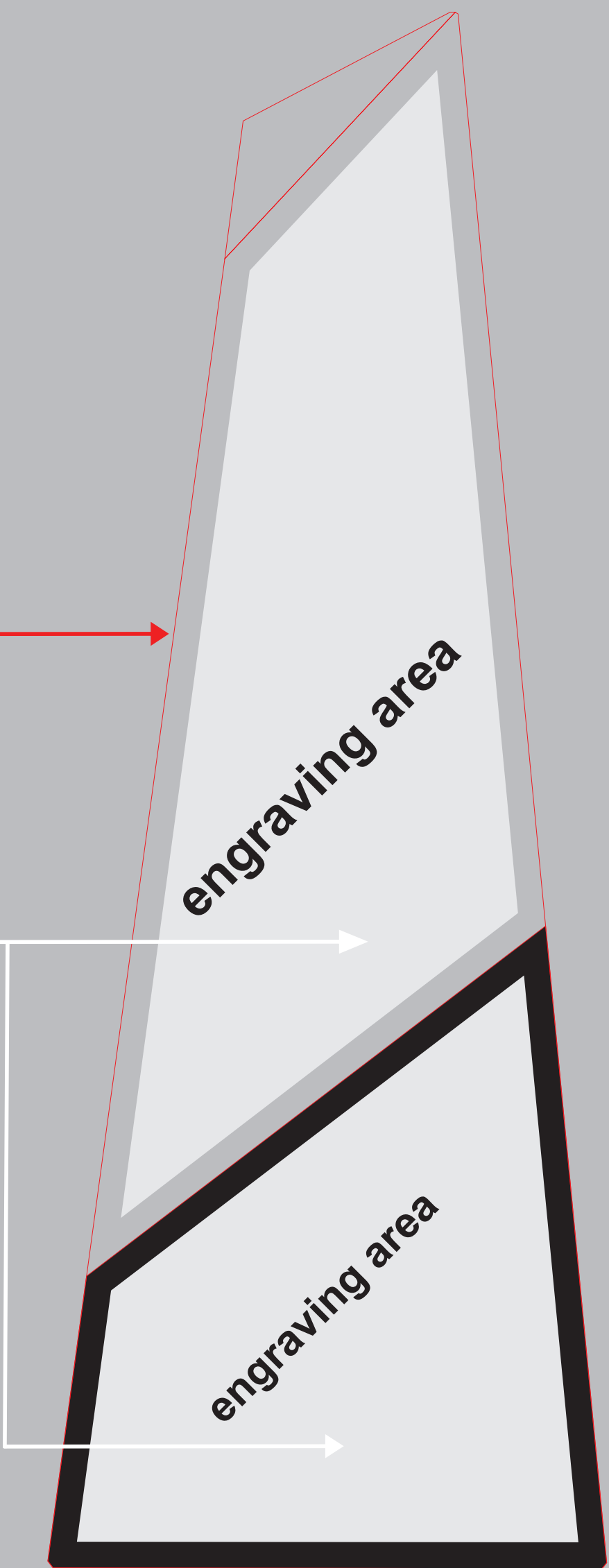
we only use vector objects (inscriptions, logos, characters)

the pattern for engraving will be prepared in grey using 70 % black in C M Y K scale

when filling with paint, please specify colour (paint palette in separate file)

ENGRAVING

! Because of manual processing of the glass trophies, template may slightly differ from the final product.



C078